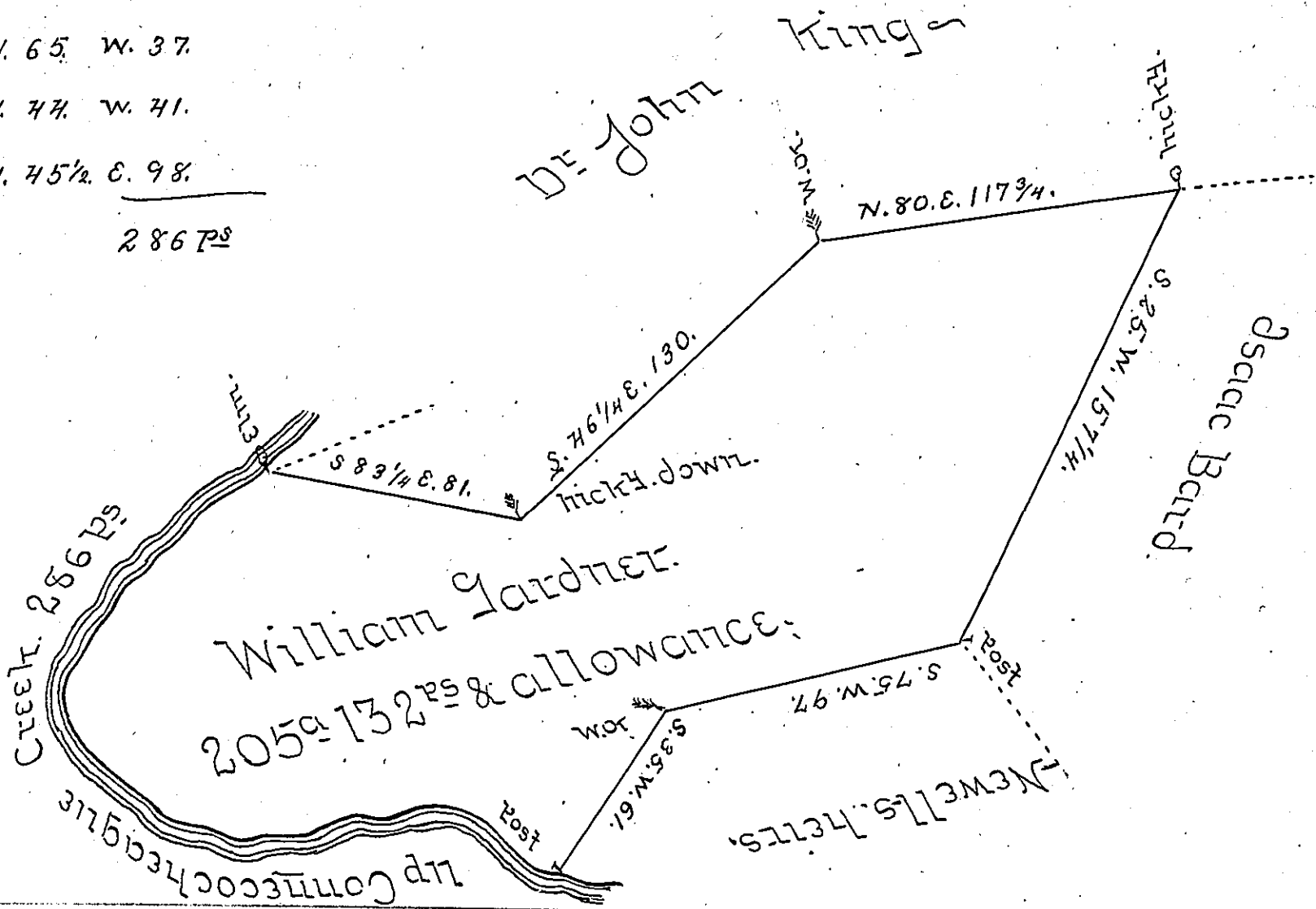


Courses up Connococheague Creek,

- N. 65 1/2 W. 46 P^s
- S. 78. W. 64.
- N. 65. W. 37.
- N. 44. W. 41.
- N. 45 1/2 E. 98.

286 P^s



Draft of a tract of land situate in Peters Township Franklin County formerly surveyed to William Gardner on his Warrant dated the 11th of February 1742 and now Resurveyed and errors corrected and found to contain two hundred and five acres one hundred and thirty two perches & allowance for Roads &c.

May 10th 1806.

P- Tho Kirby U.S.

To Samuel Cochran Esq^r
 Surveyor General of Penn^a

IN TESTIMONY that the above is a copy of the original remaining on file in the Department of Internal Affairs of Pennsylvania, made conformably to an Act of Assembly approved the 16th day of February, 1833, I have hereunto set my Hand and caused the Seal of said Department to be affixed at Harrisburg, this eighteenth day of January 1905.

George R. Brown
 Secretary of Internal Affairs.